

Article title: Improving Access to Surgery Through Surgical Team Mentoring – Policy Lessons From Group Model Building With Local Stakeholders in Malawi

Journal name: International Journal of Health Policy and Management (IJHPM)

Authors' information: Henk Broekhuizen^{1,2}, Martilord Ifeanyi¹, Gerald Mwapasa³, Chiara Pittalis⁴, Patrick Noah³, Nyengo Mkandawire³, Eric Borgstein³, Ruairí Brugha⁵, Jakub Gajewski⁴, Leon Bijlmakers^{1*}

¹Radboud Institute for Health Sciences, Radboud University Medical Centre, Nijmegen, The Netherlands.

²Department of Health and Society, Wageningen University and Research, Wageningen, The Netherlands.

³College of Medicine, Blantyre, Malawi.

⁴Institute of Global Surgery, Royal College of Surgeons in Ireland, Dublin, Ireland.

⁵Department of Epidemiology and Public Health Medicine, Royal College of Surgeons in Ireland, Dublin, Ireland.

(*Corresponding author: Leon.Bijlmakers@radboudumc.nl)

Supplementary file 5. Sensitivity Analysis of Parameter Effects on Total Mentoring Costs (Figures A16-A20).

Figure A16: Impact of percentage_avoided_that_conservative on total_mentoring_costs

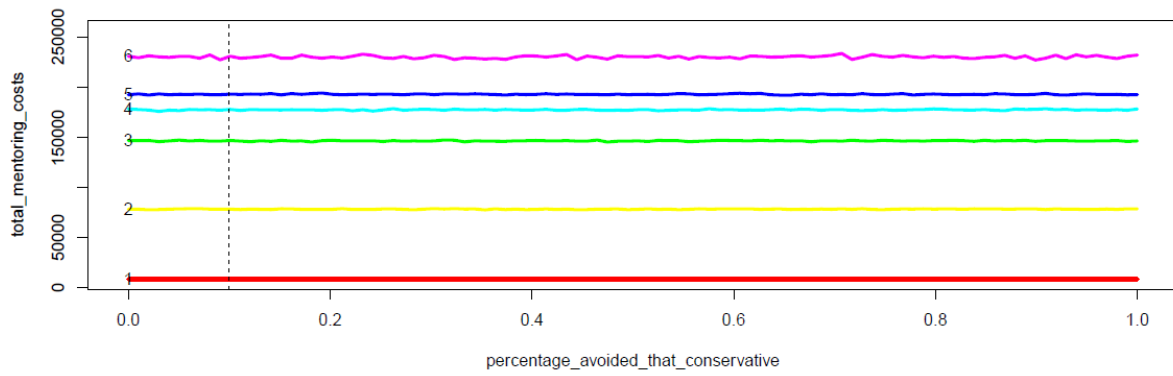
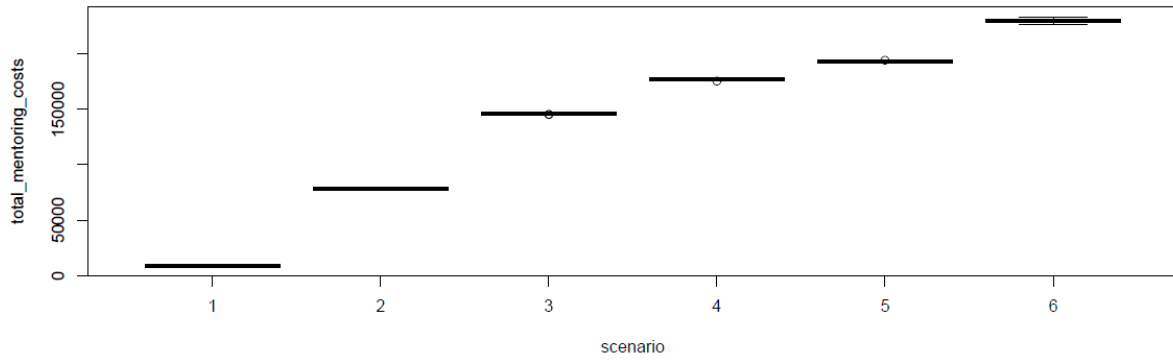


Figure A17: Impact of percentage_costs_ward on total_mentoring_costs

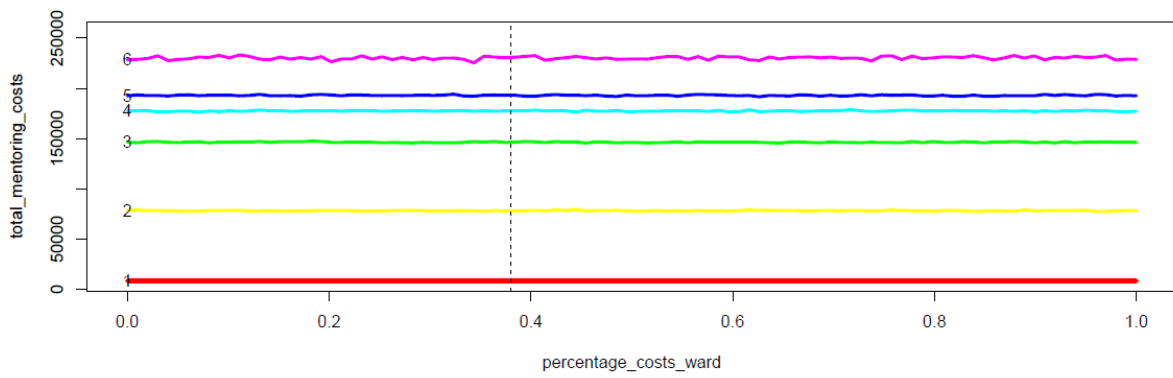
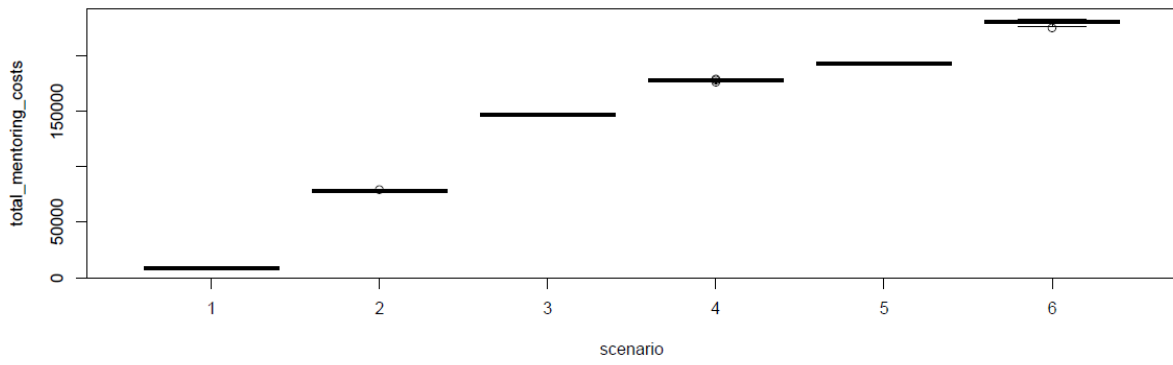


Figure A18: Impact of percentage_avoided_operated_locally on total_mentoring_costs

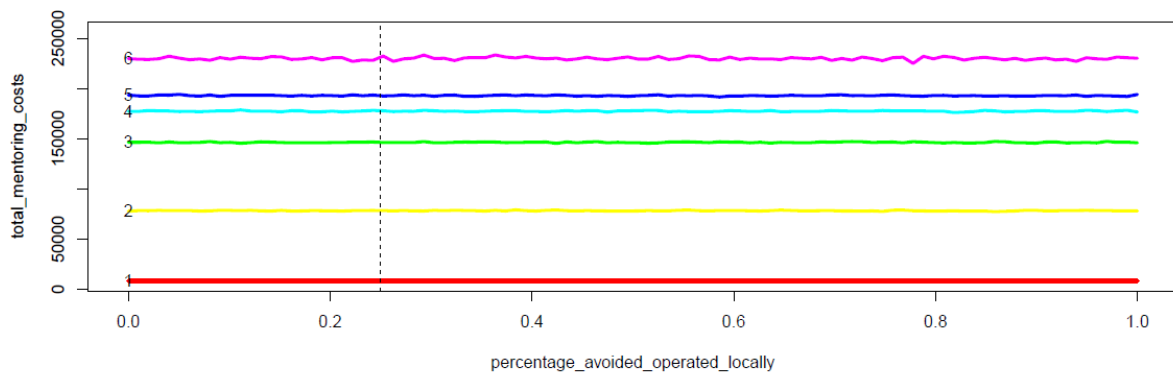
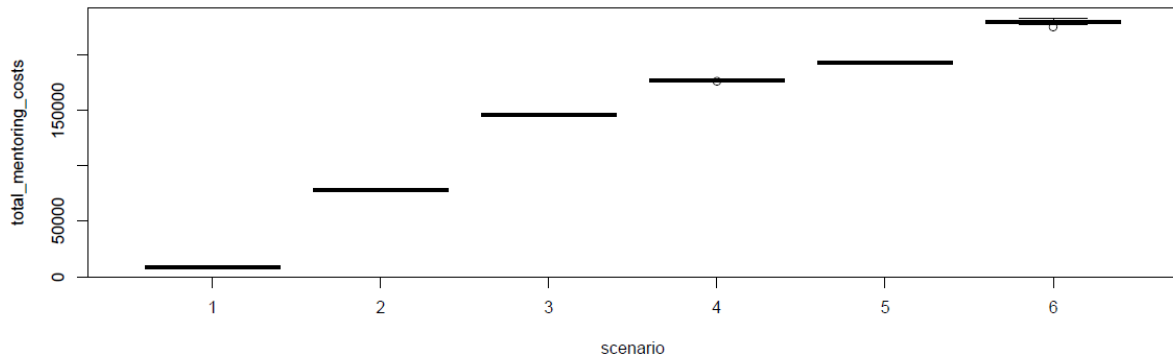


Figure A19: Impact of percentage_referrals_surgical on total_mentoring_costs

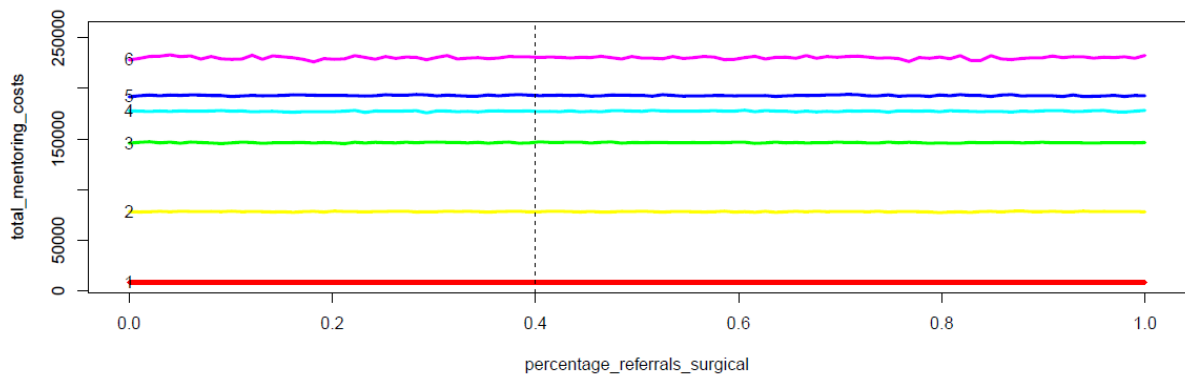
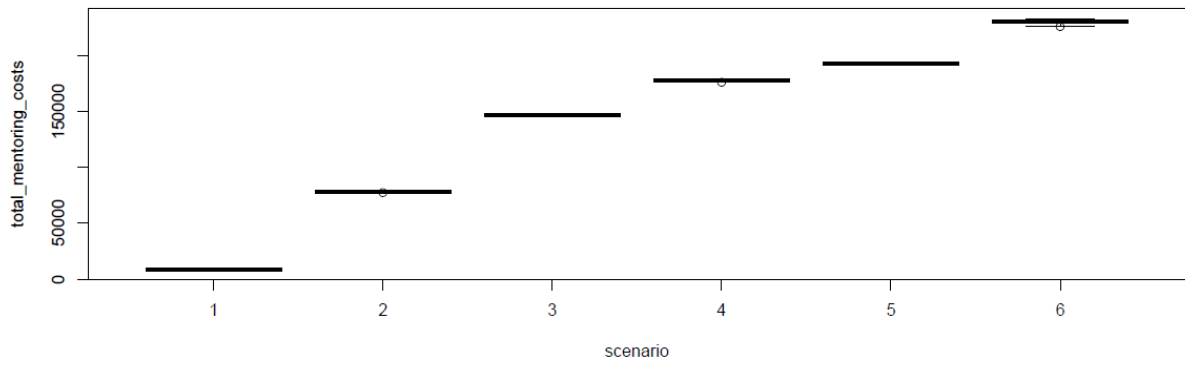


Figure A20: Impact of effectiveness_constant on total_mentoring_costs

