

**Article title:** Health Inequalities of STEMI Care Before Implementation of a New Regional Network: A Prefecture-Level Analysis of Social Determinants of Healthcare in Yunnan, China

**Journal name:** International Journal of Health Policy and Management (IJHPM)

**Authors' information:** Li Mei Zhang<sup>1,2</sup>, Alan Frederick Geater<sup>2\*</sup>, Edward B. McNeil<sup>2</sup>, Yun Peng Lin<sup>1</sup>, Si Chen Liu<sup>3</sup>, Heng Luo<sup>4,5</sup>, Yuan Zhang Wang<sup>1,5</sup>, Shao Chang Wen<sup>1,5</sup>

<sup>1</sup>Department of Cardiology, People's Hospital of Chuxiong Prefecture, Yunnan, China.

<sup>2</sup>Epidemiology Unit, Faculty of Medicine, Prince of Songkla University, Hat Yai, Thailand.

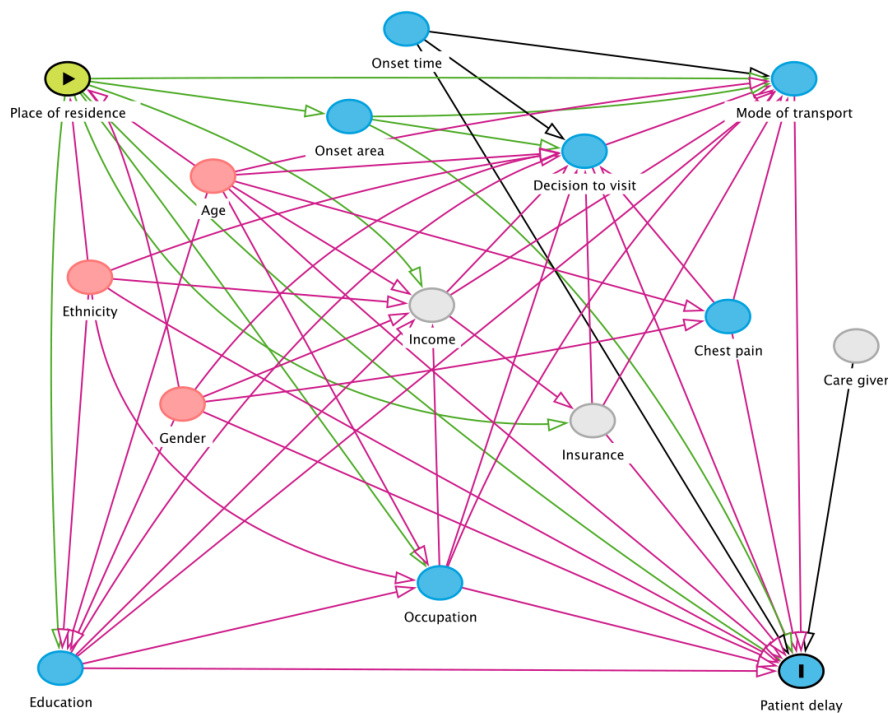
<sup>3</sup>Faculty of Dentistry, Prince of Songkla University, Hat Yai, Thailand.

<sup>4</sup>People's Hospital of Chuxiong Prefecture, Yunnan, China.

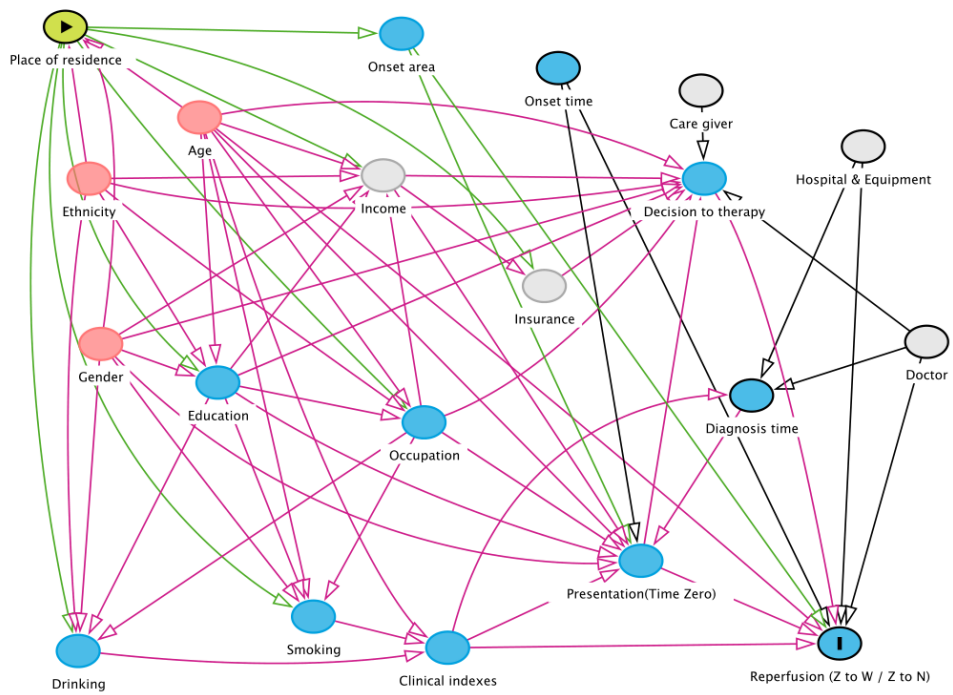
<sup>5</sup>Executive Office, Alliance of Chuxiong Prefecture Chest Pain Centres, Yunnan, China.

(\*Corresponding author: [alan.g@psu.ac.th](mailto:alan.g@psu.ac.th))

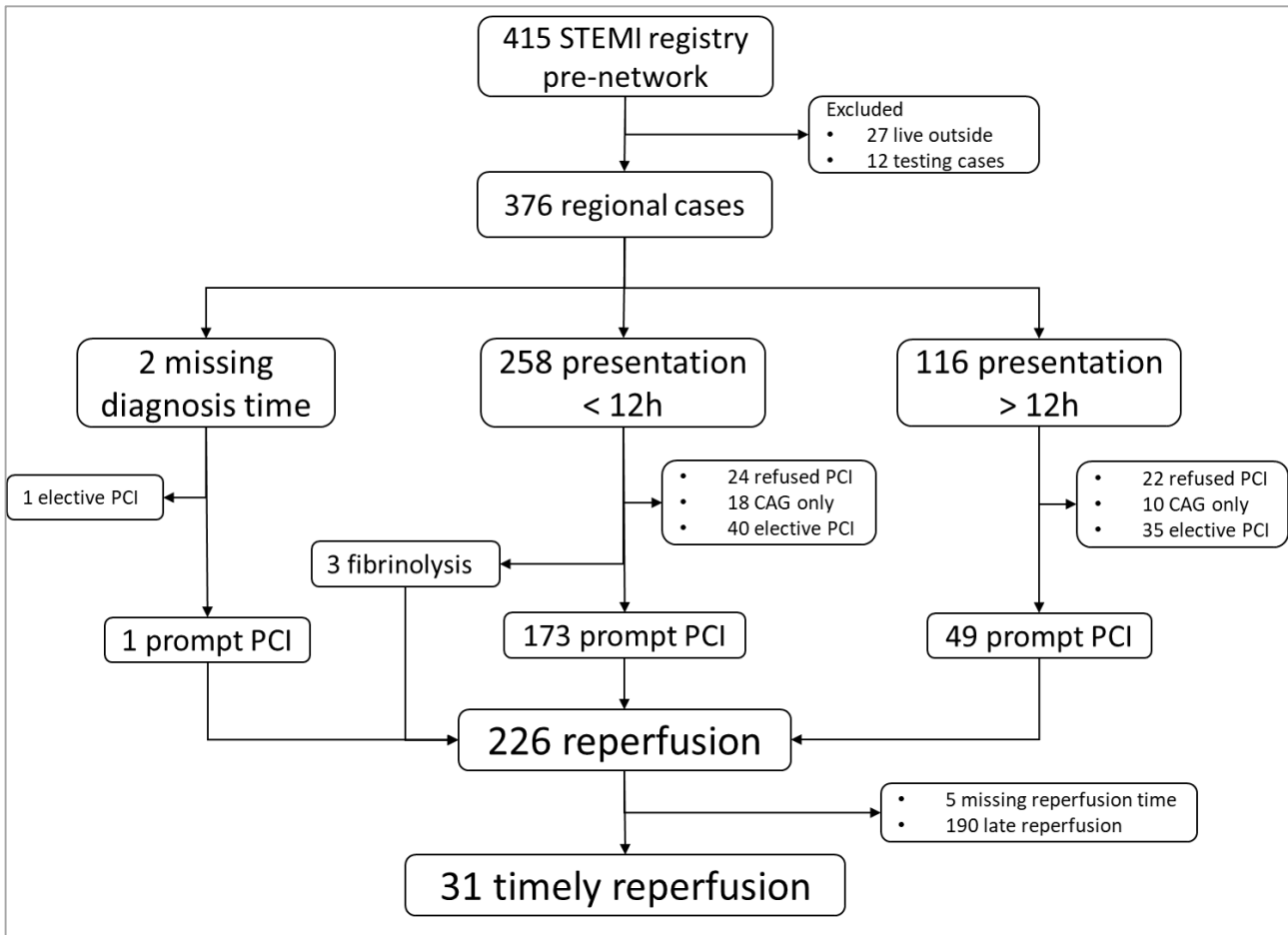
### Supplementary file 1



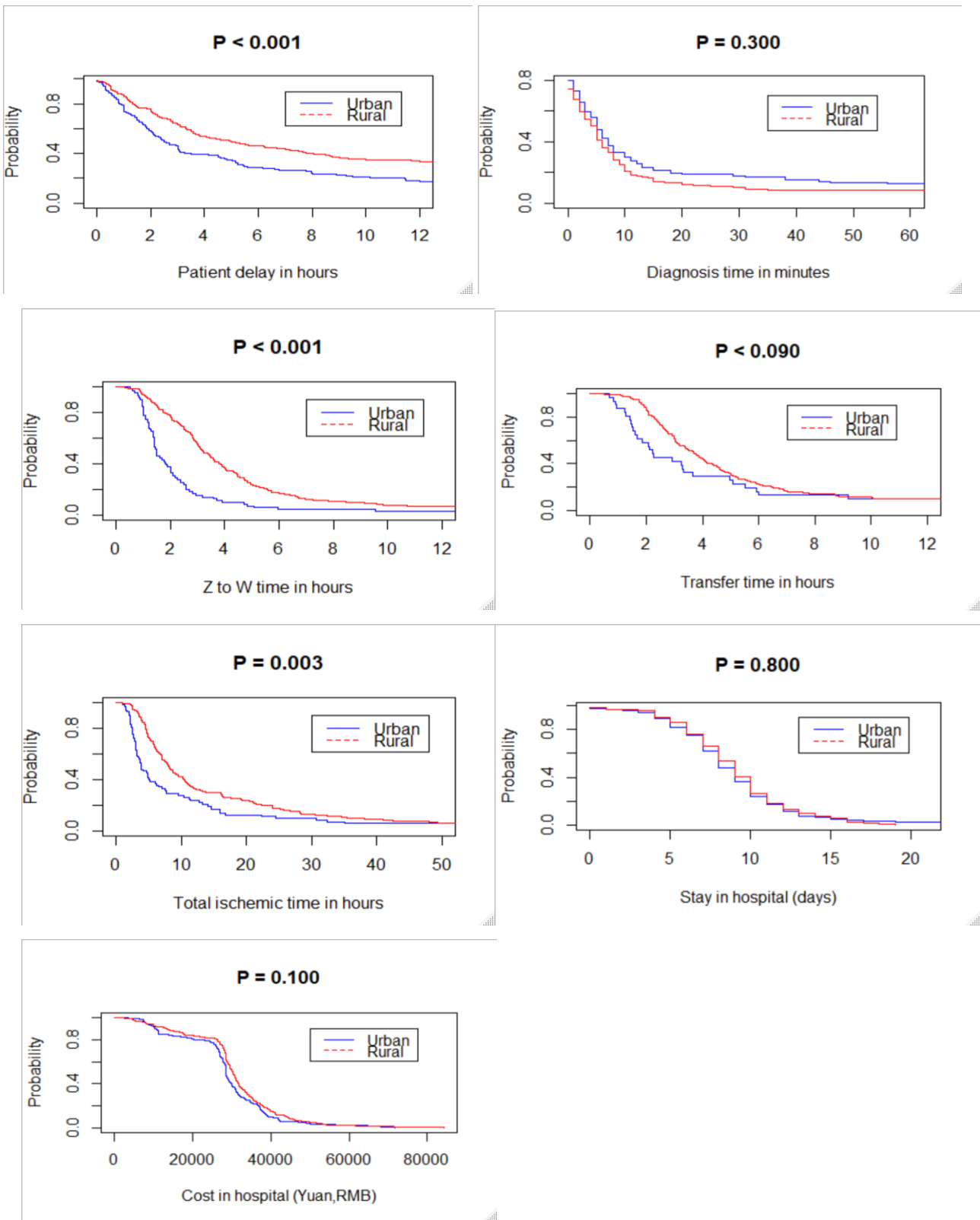
**Figure S1.** Example of a directed acyclic graph used to visualize causal pathways of patient delay in STEMI care



**Figure S2.** Example of a directed acyclic graph used to visualize causal pathways of reperfusion time in STEMI care



**Figure S3.** Diagram of STEMI care process in current study



**Figure S4.1.** Kaplan-Meier curves of continuous outcomes of STEMI care among area groups. In Figures S4.1 to S4.6 the p-values are from the log-rank test. Z to W time is only for patients who received prompt PCI. Transfer time is only for patients contacted in a non-PCI hospital. The

Probability on the y-axis refers to the probability of having a value equal to or longer than the corresponding value on the x-axis.

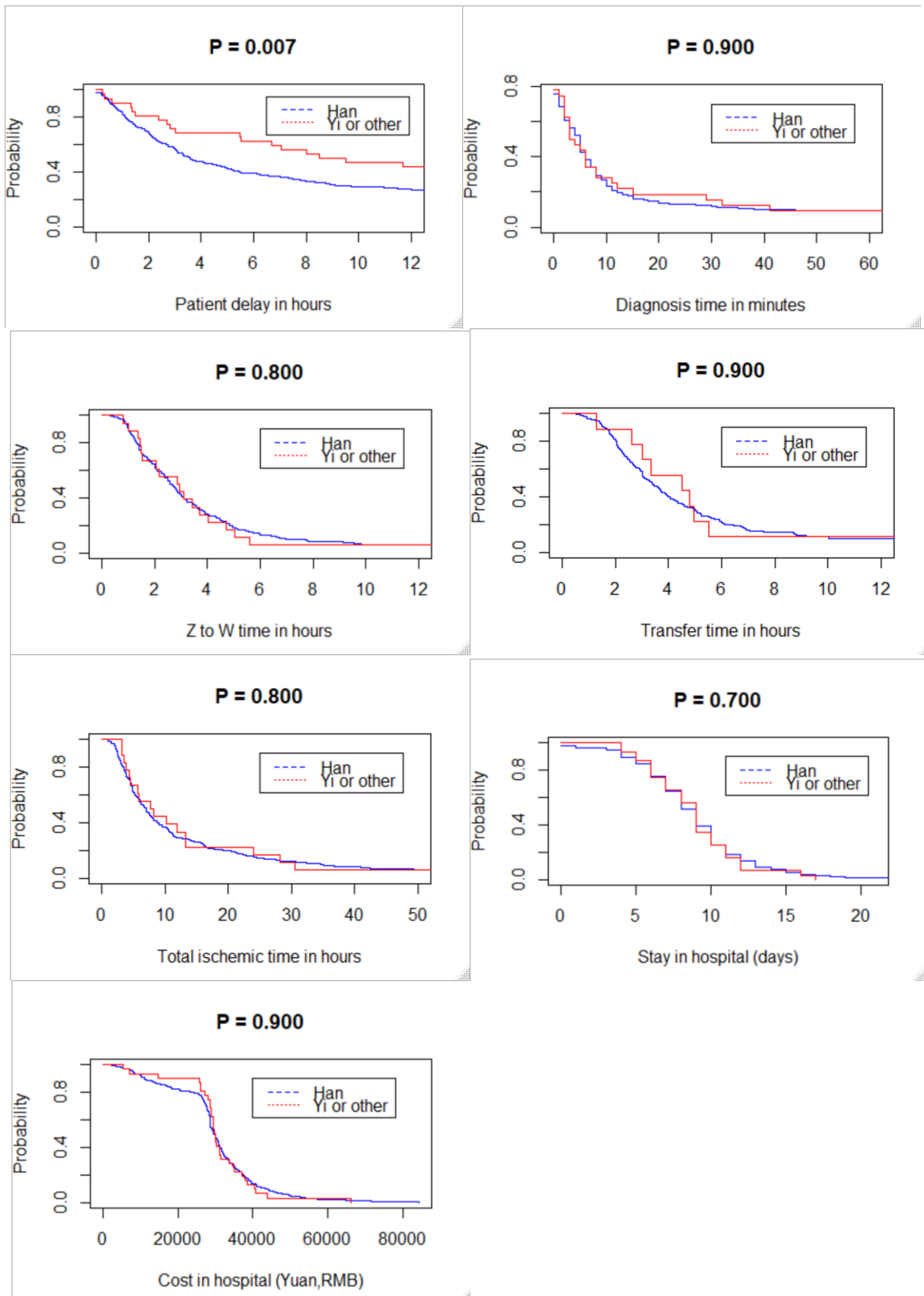


Figure S4.2. Kaplan-Meier curves of continuous outcomes of STEMI care among ethnicity groups

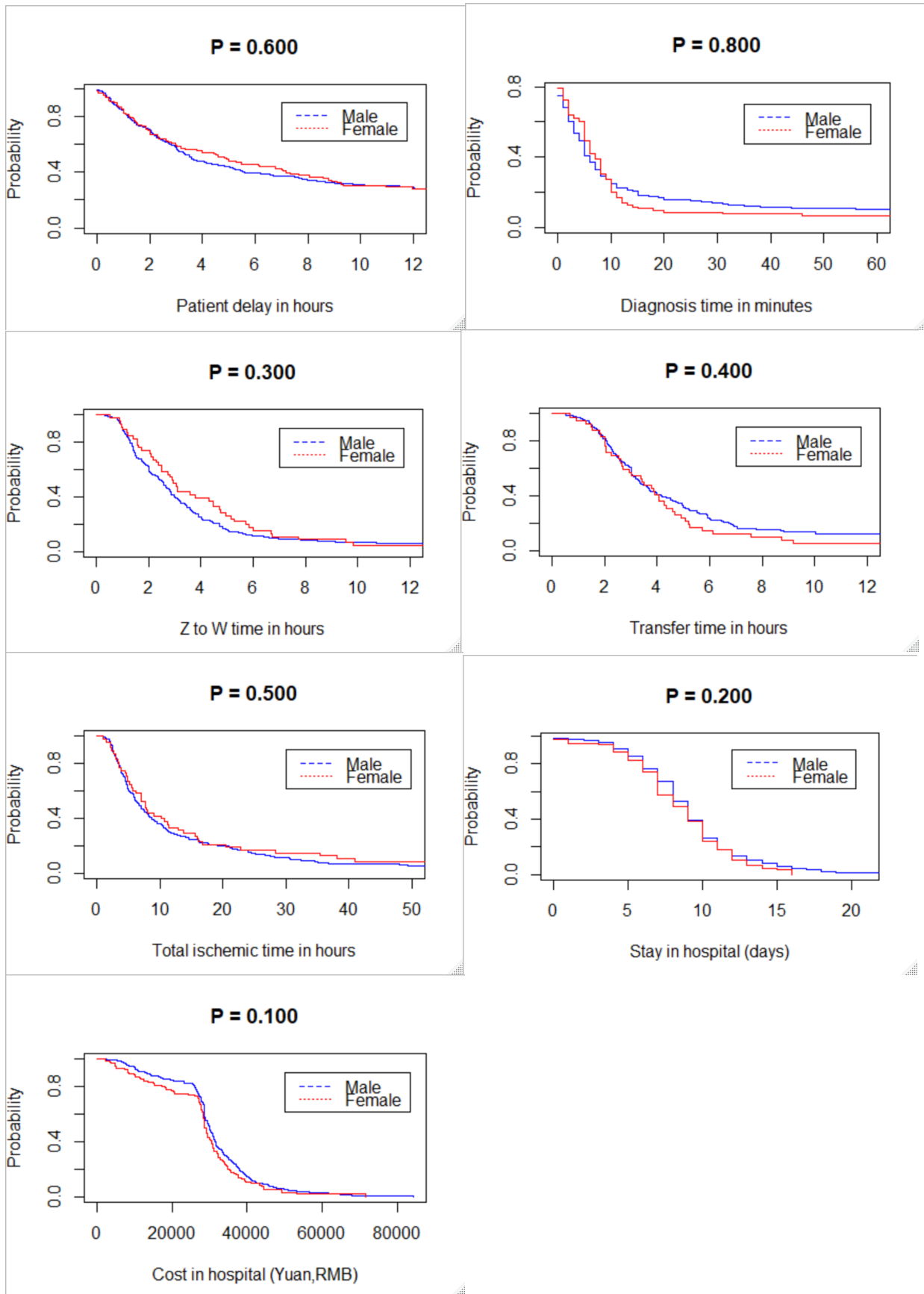


Figure S4.3. Kaplan-Meier curves of continuous outcomes of STEMI care among sex groups

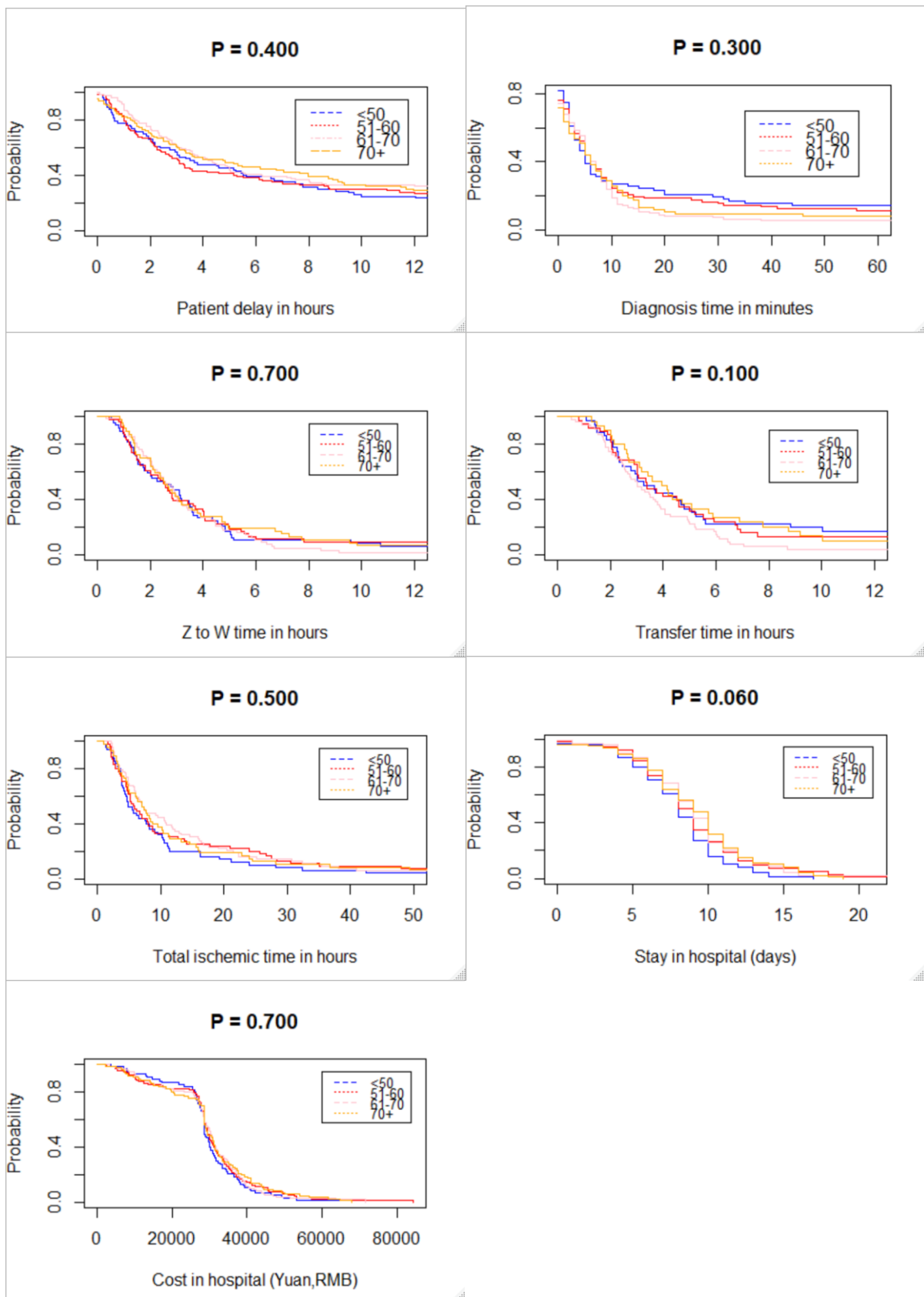


Figure S4.4. Kaplan-Meier curves of continuous outcomes of STEMI care among age groups



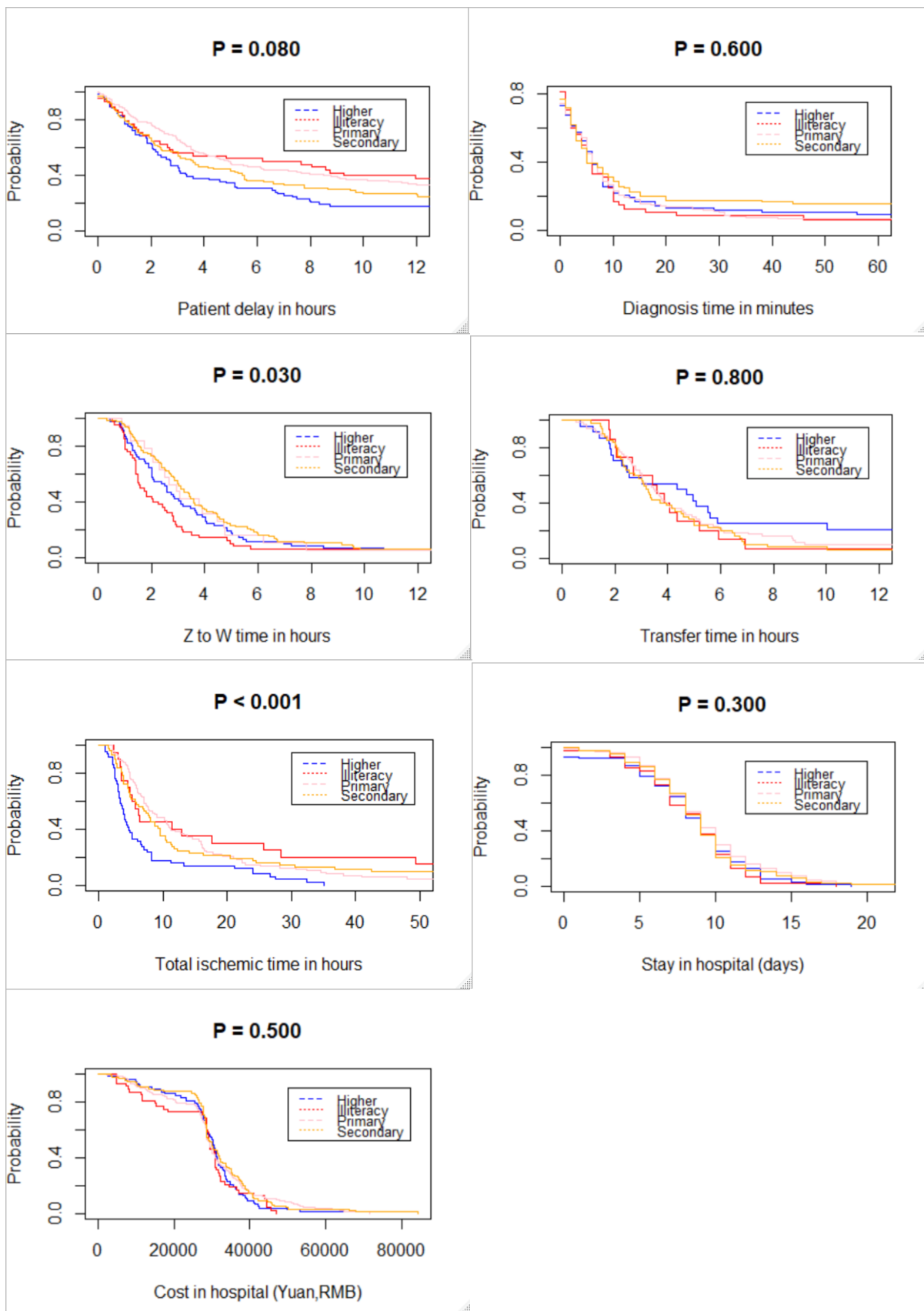


Figure S4.5. Kaplan-Meier curves of continuous outcomes of STEMI care among education groups

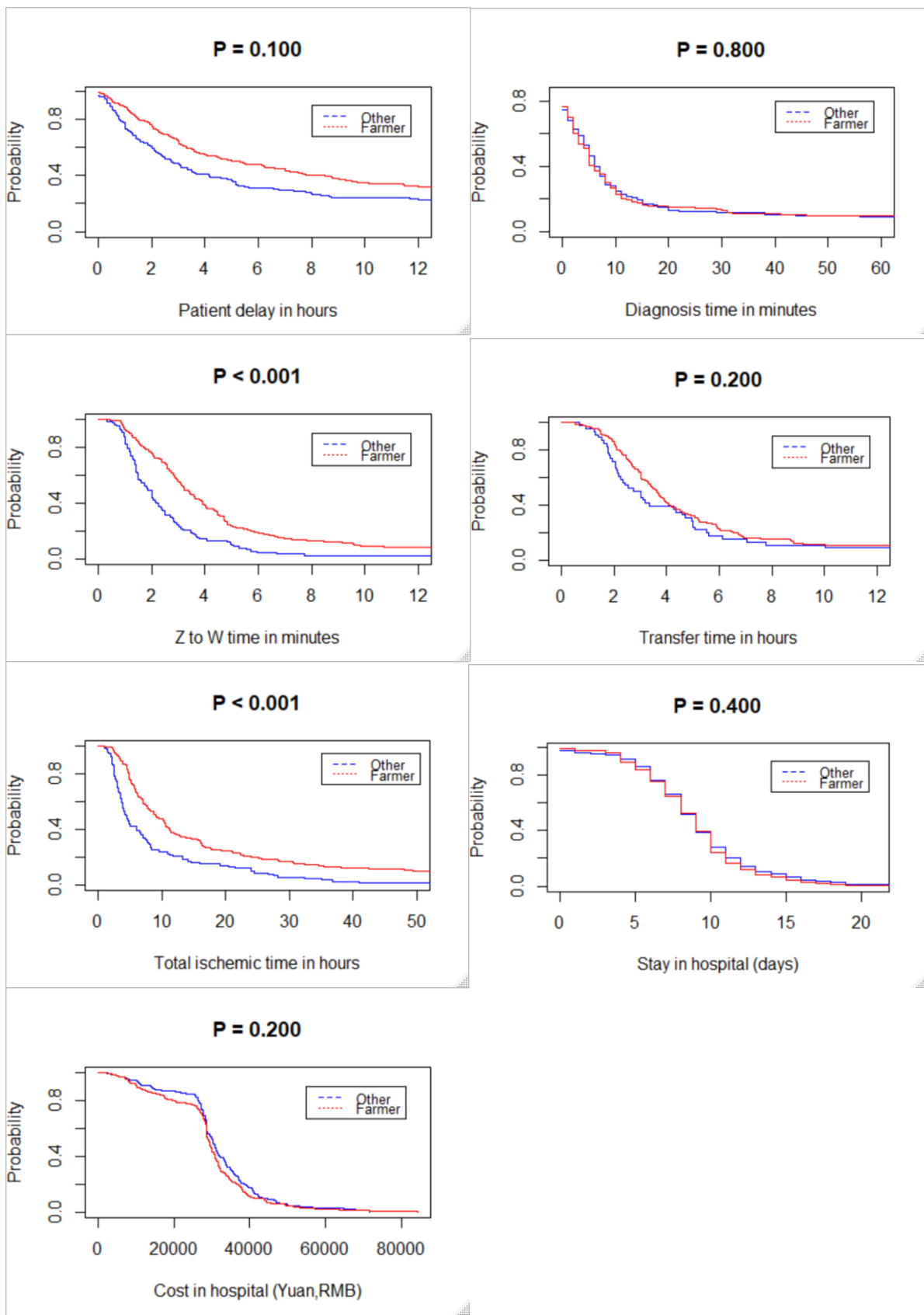


Figure S4.6. Kaplan-Meier curves of continuous outcomes of STEMI care among occupation group